

The Geological Society

servicing science & profession

Corporate Supporters:

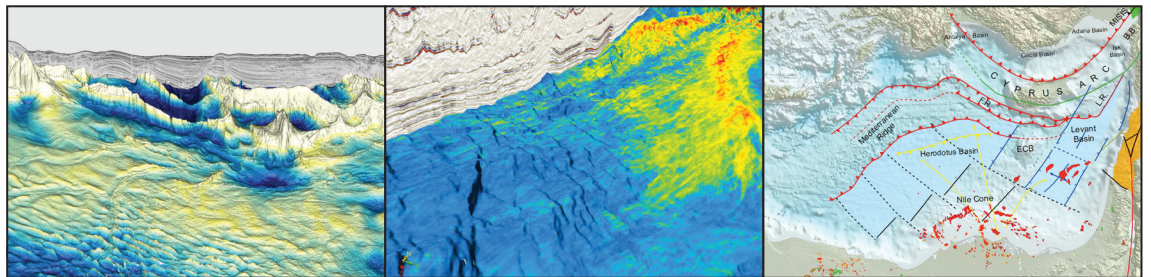


Registration Open

# Eastern Mediterranean – An emerging major petroleum province

29-30 May 2018

The Geological Society, Burlington House, Piccadilly, London



Convenor:

Iain Brown  
PGS

Mark Osborne  
BP

James Gardner  
BP

**The objective of the conference is to enhance technical understanding of the status of key plays in this geologically complex region**

In recent years the Eastern Mediterranean region has witnessed growing interest from international energy companies. Substantial gas reserves have been found in Egypt's Nile Delta Basin and in the Mediterranean coastal areas since 1995, and in more recent times Noble Energy has discovered a series of substantial gas fields off the Israeli coast. Several countries have been announcing licensing rounds in recent years.

A key objective of the meeting is to seek a strong set of papers to highlight in greater depth recent discoveries such as those of the prolific Pliocene Nile Delta province and the more recent ENI Zohr supergiant carbonate discovery and the successful clastic plays in the Levant Basin. Results from Totals current drilling campaign in Cyprus Blk 11 will also drive interest in the region.

The conference will review exploration activity, as well as challenges to a better understanding of the geology in the eastern Mediterranean, including seismic (and other data) acquisition and imaging. Key geological issues for understanding subsurface risk in the area will be addressed, including but not limited to

- Geodynamic Evolution
- Pre-salt plays including carbonate build-ups
- Source rock distribution and maturity
- The importance of regional seismic and refraction data
- Sediment provenance studies
- Reservoir quality and reservoir characterisation
- Potential of deeper plays and possibilities for oil.

Event Sponsor:



**For further information or to register please contact:**

Sarah Woodcock, The Geological Society, Burlington House, Piccadilly, London W1J 0BG. T: 020 7434 9944  
W: [www.geolsoc.org.uk/PG-East-Med-2018](http://www.geolsoc.org.uk/PG-East-Med-2018)

*At the forefront of petroleum geoscience*

[www.geolsoc.org.uk/petroleum](http://www.geolsoc.org.uk/petroleum)

#PGEastMed18

